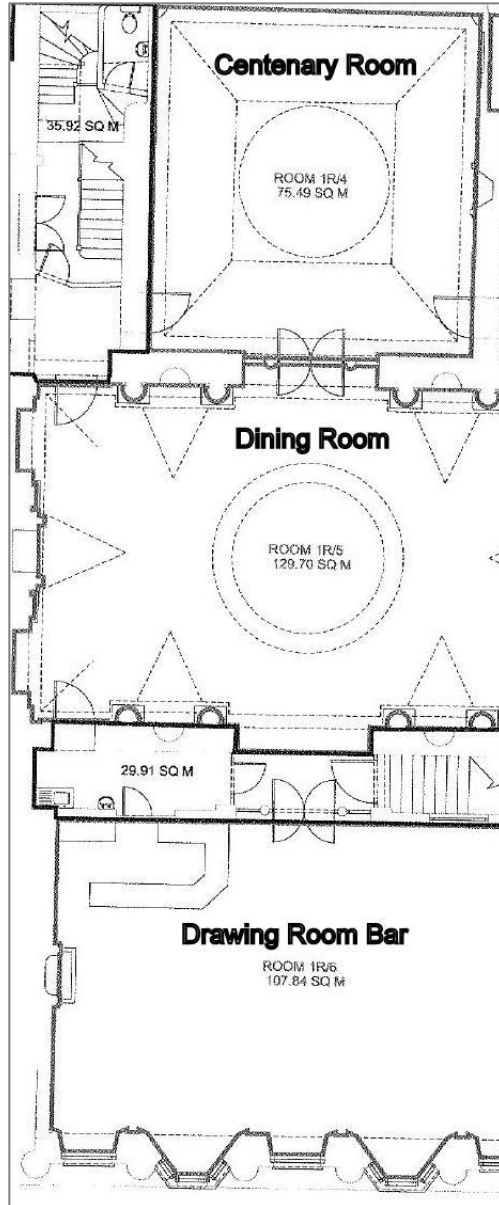




The Clifton Club  
1818-2018

## Room Capacities



### The Centenary Room

#### *Conference*

Theatre Style	55
Boardroom	24
Cabaret	40

Sit Down Meal 40

Can be used for band with a dance floor (5.22m x 4.35m/22.7 sqm)

---

### The Dining Room

Theatre Style	100
Sit Down Meal	100
Standing	175

(in conjunction with Drawing Room)

Can be used for band with a dance floor (5.22m x 4.35m/22.7 sqm)

---

### The Drawing Room Bar

Drinks Reception 80 standing